

Plymouth Congregational Church

Facilities Master Planning

08 28 2022



MASTER PLAN OBJECTIVES

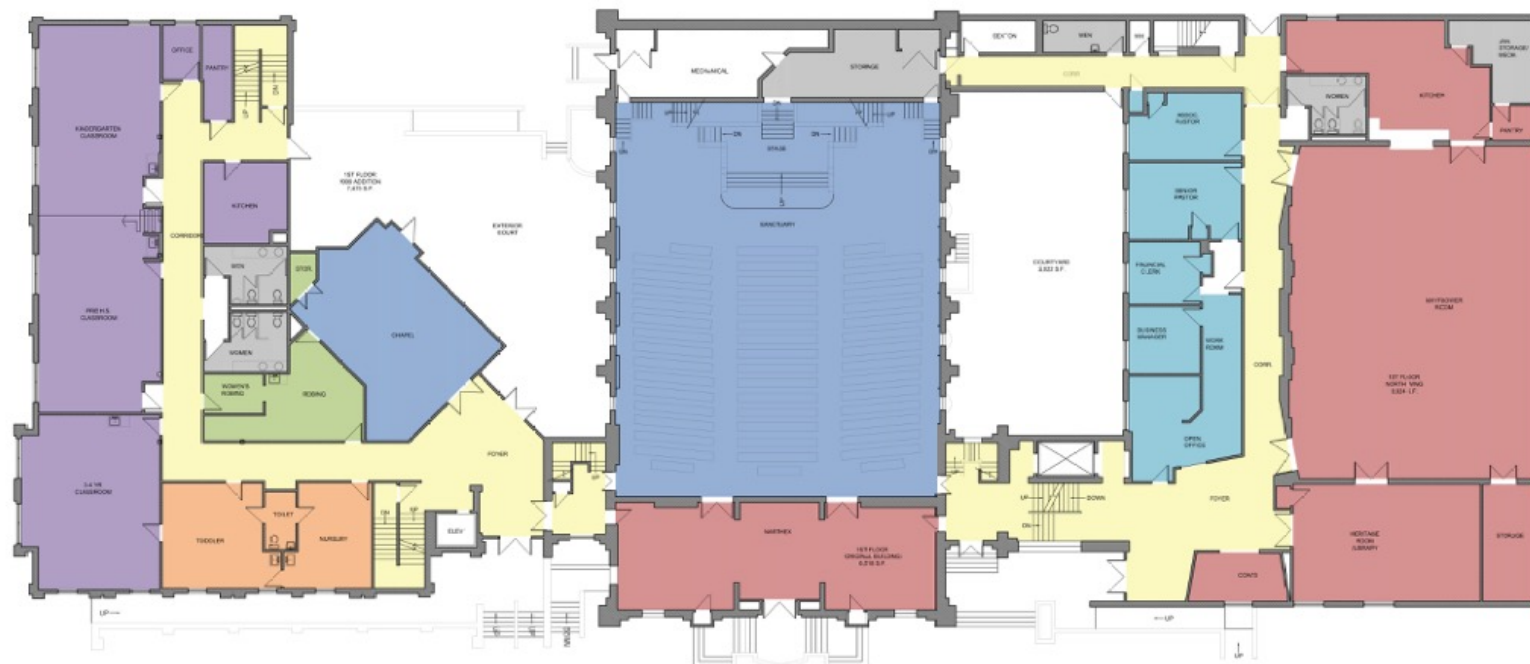
A well-thought-out roadmap for long term and incremental improvements to the church facilities

A vision that enables the church to function well and one that expresses who the church is today

Ideas for unifying the three buildings through updated interior finishes

LEGEND

- ADMINISTRATIVE
- CHRISTIAN ED/ CLASSROOMS
- CIRCULATION
- FELLOWSHIP
- MUSIC
- HEAD START
- SUPPORT
- WORKSHIP
- OUTREACH



LEGEND

- ADMINISTRATIVE
- CHRISTIAN ED/ CLASSROOMS
- CIRCULATION
- FELLOWSHIP
- MUSIC
- HEAD START
- SUPPORT
- WORKSHIP
- OUTREACH



ADMINISTRATIVE	HEAD START
CHRISTIAN ED/ CLASSROOMS	SUPPORT
CIRCULATION	WORKSHOP
FELLOWSHIP	OUTREACH
MUSIC	



CONGREGATIONAL INPUT

Detailed tours of building with leadership

Informal phone interviews with congregational members

Online survey of full congregation

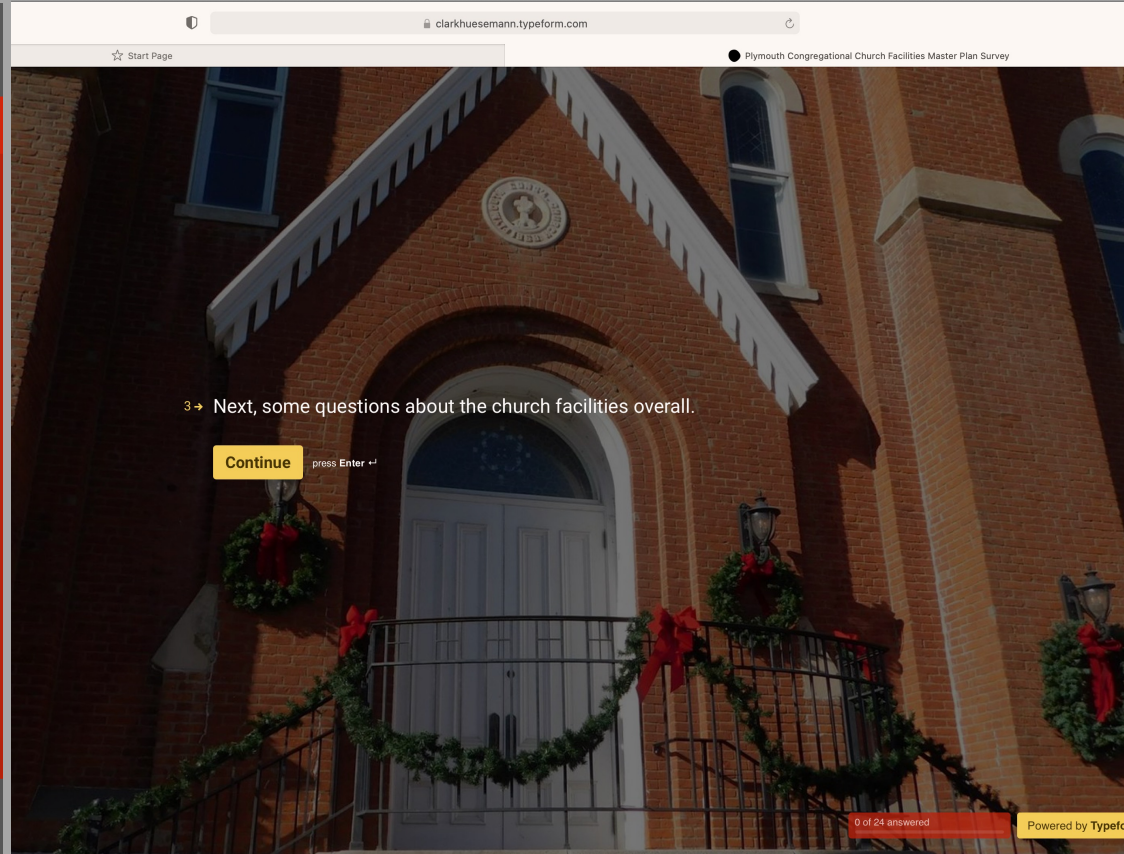
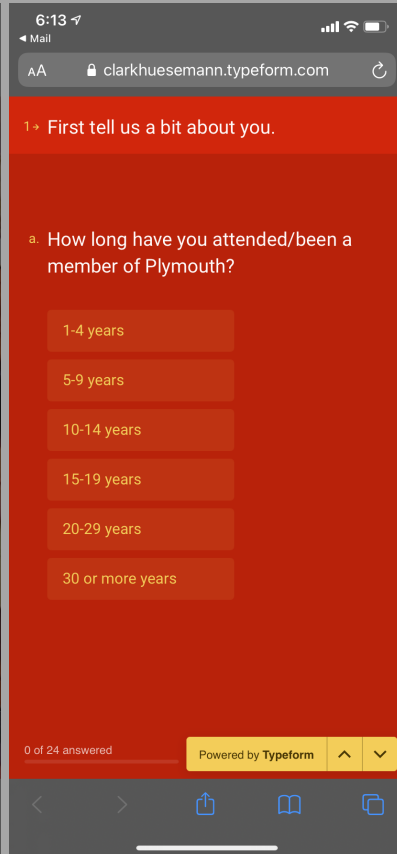
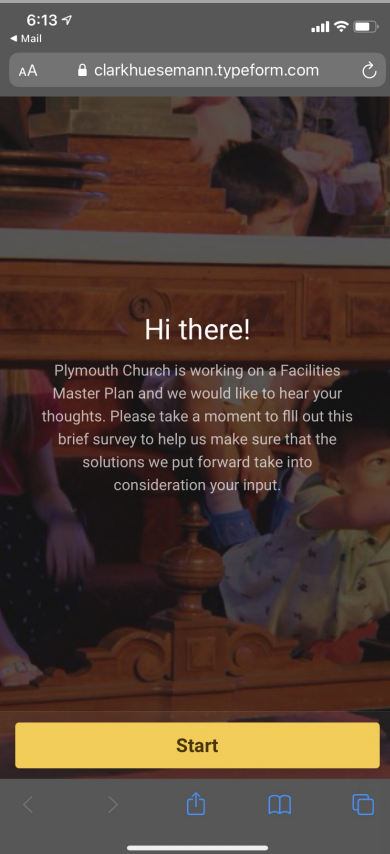
Conversation/walk through with the Head Start folks

Iterative work with the facilities master plan committee

In person congregational presentation of draft master plan work

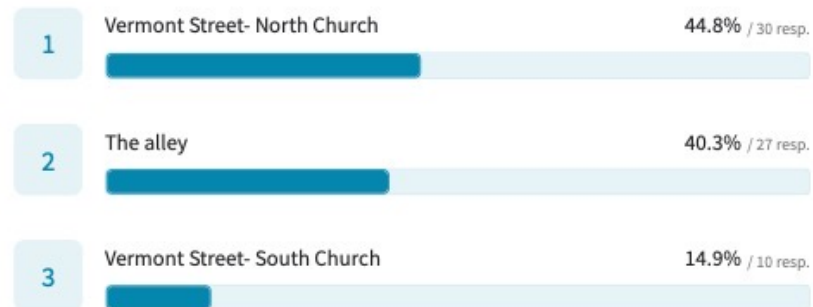
Meetings with the choir, organ, and facilities committees

CONGREGATIONAL INPUT – Online Survey



What entry do you most often use on Sunday mornings?

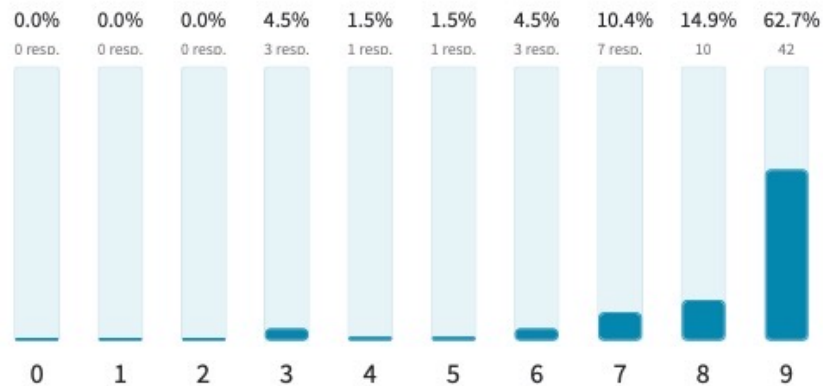
67 out of 67 answered



Please rank your level of agreement with the following:
"The beauty and history of Plymouth's building are worth preserving."

67 out of 67 answered

8.1 Average rating



SUMMARY OF OBSERVATIONS

- The arrival experience and traffic flow is crowded and awkward
- Congregation growth is putting more pressure on gathering, fellowship and flow
- The choir has grown such that practice and performance space are cramped
- Many spaces are not universally or easily accessible
- Interior finishes, lighting, and display are tired and inconsistent
- Improved acoustics in the sanctuary are central to worship
- Middle school, high school and youth group do not have a place to call home
- There are plenty of classrooms, some specialty rooms are underutilized
- There is some available space in the south basement
- The site is landlocked
- The main building is on the National Historic Register and this will impact decisions on how improvements are made

MASTER PLAN NEEDS

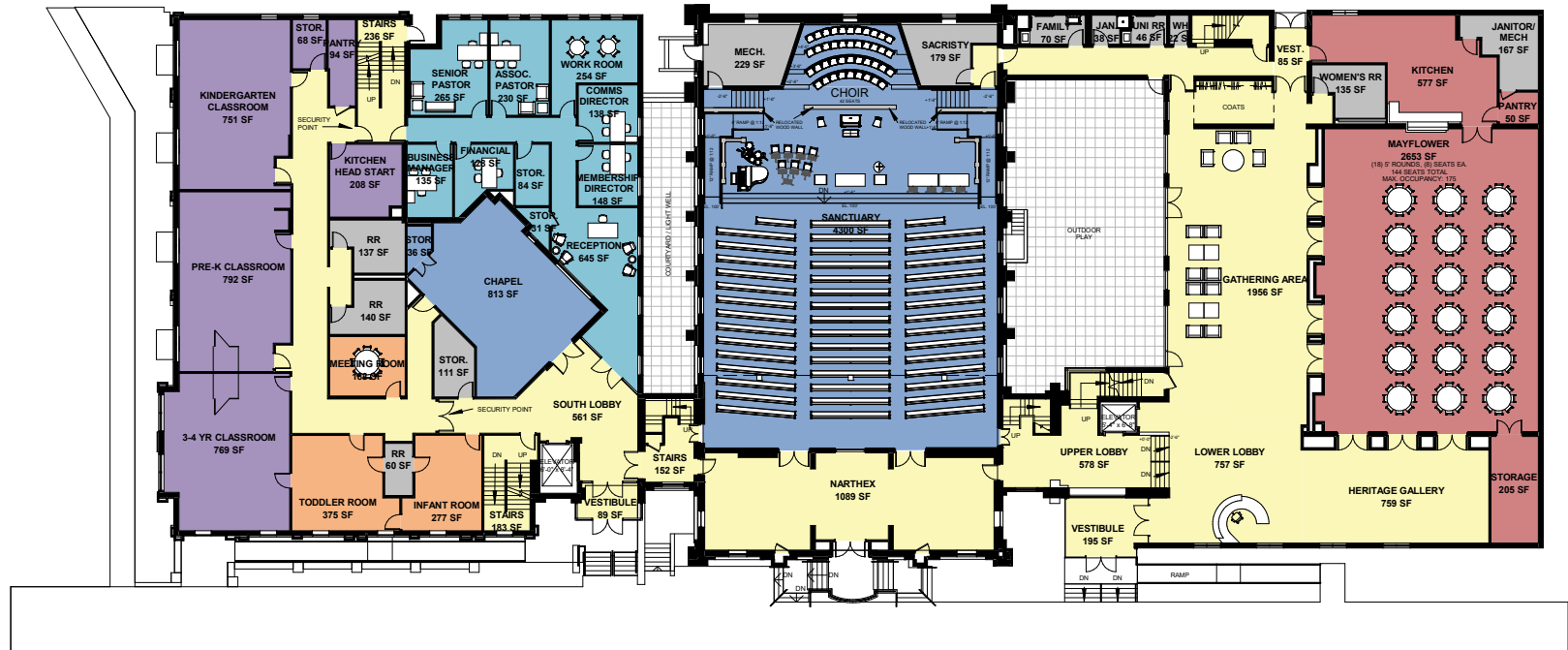
1. Improve accessibility at main entry, more space, less switchbacks
2. Improve arrival experience and flow from entry to worship to fellowship
3. Increase /improve space for choir before & during worship
4. Alter the balcony to improve sightlines
5. Provide space for middle and high school Christian ed “home”
6. Provide space for youth group that they can call their own
7. Provide a better band rehearsal space
8. Provide for safety/security of Head Start
9. Improve NA outreach space
10. Organize interior design to support the mission
11. Consolidate office space
12. Make the rooms that serve fellowship work better

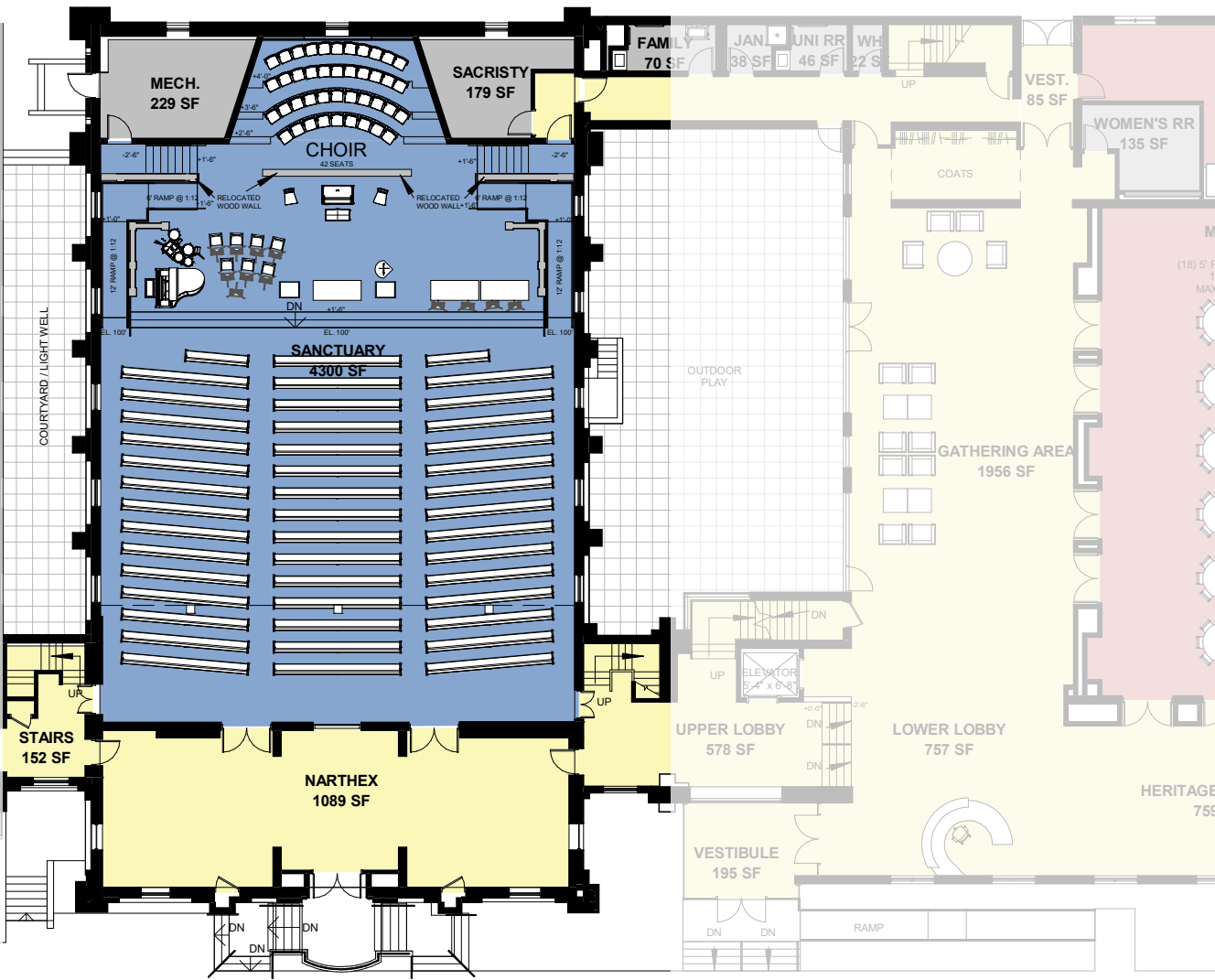
PROJECT GOALS

1. Express the progressive mission of the church, “who we are today”
2. Improve arrival and access to building
3. Create a welcoming feeling of openness, wayfinding and traffic flow
4. Enhance the worship experience for all
5. Improve the ability to deliver robust worship with liturgical flexibility
6. Enable improved conversation and fellowship
7. Honor the history of the original building

Legend

- ADMINISTRATIVE
- CHRISTIAN ED/CLASSROOMS
- CIRCULATION
- FELLOWSHIP
- HEAD START
- SUPPORT
- WORSHIP

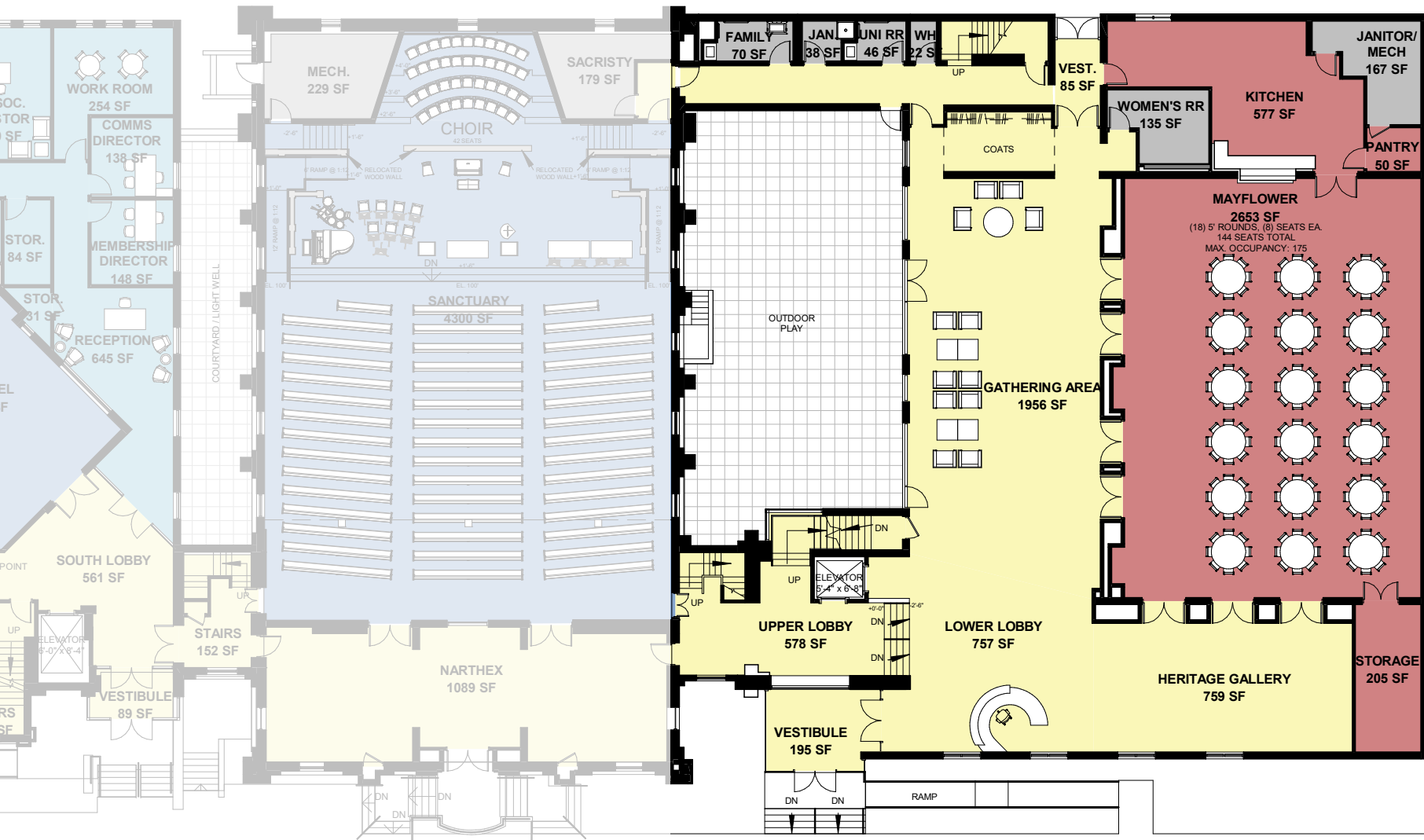






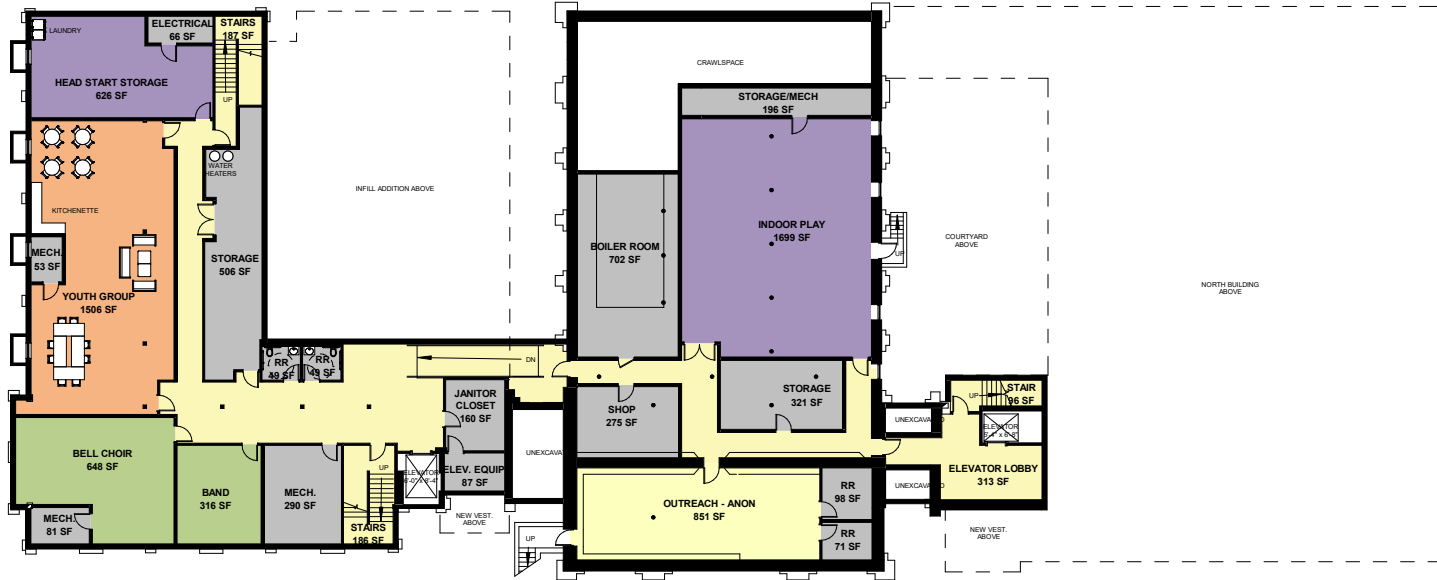






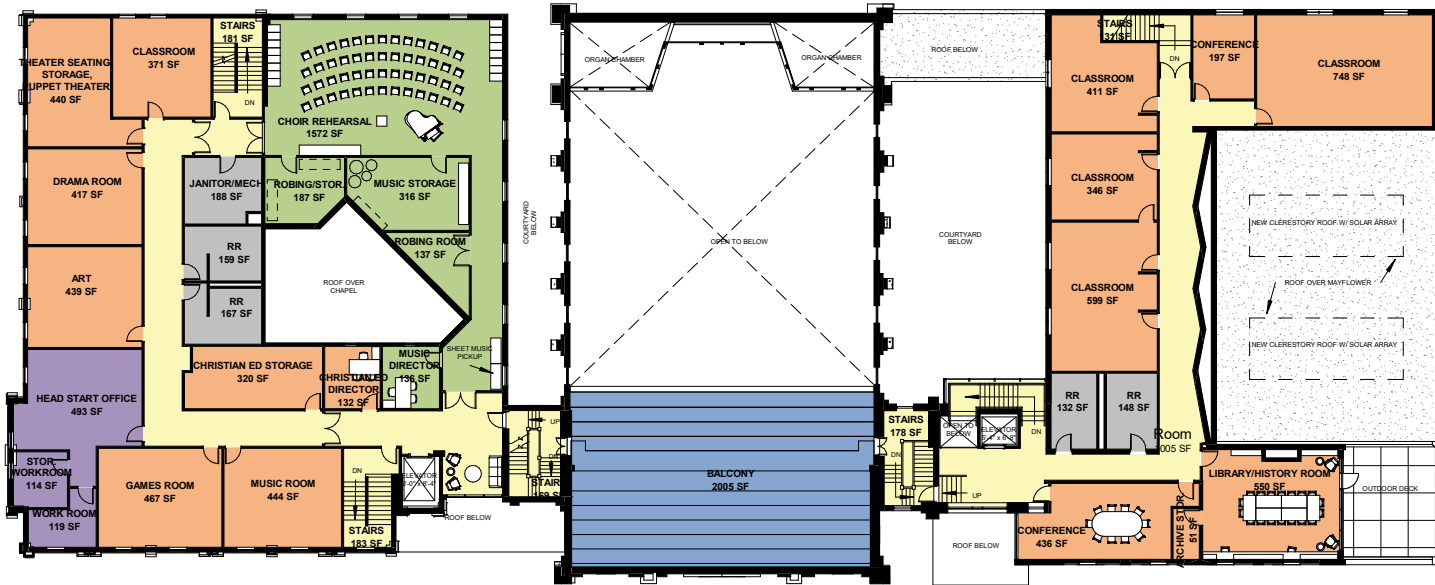
Legend

- CHRISTIAN ED/CLASSROOMS
- CIRCULATION
- HEAD START
- MUSIC
- OUTREACH
- SUPPORT



Legend

- CHRISTIAN ED/CLASSROOMS
- CIRCULATION
- HEAD START
- MUSIC
- SUPPORT
- WORSHIP



PRIORITY IMPROVEMENTS

- Accessibility & acoustic improvements at choir loft
- Accessibility and flexibility improvements at chancel
- New paint and flooring throughout sanctuary and narthex
- New lighting and HVAC throughout sanctuary and narthex
- Adjust height of balcony to improve sightlines
- Sound system, hearing loop, and acoustic improvements to sanctuary
- New furniture at narthex and choir loft
- Refurbished organ
- New North Church entrance and ramp
- New Youth room
- New Band and Bell Choir rooms
- Repairs to exterior stone and stained glass

Plymouth Congregational Church

Facilities Master Planning

08 28 2022

